

SOMERO[®] LINE DRAGON[®]



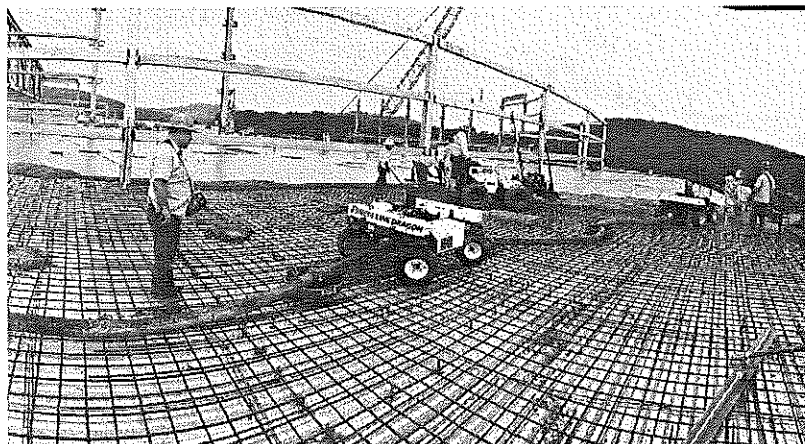
If you want to make using concrete pump hoses an even more efficient process, you need the Somero[®] Line Dragon[®] Line-Pulling and -Placing System. These remote-controlled hose-handlers are packed with powerful engines and load-sensing variable-displacement hydraulics that move lines with ease. Besides being the most nimble option on the market, these machines are sure to enhance productivity, create labor savings, and reduce the risk of injury that comes with moving pump hoses by hand.

FEATURES/BENEFITS:

- > Remote-control operation utilizes simple AA batteries
- > Intelligent Steering adjusts steering angle to prevent stress and damage to components
- > Steering capabilities include 2 wheel, 4 wheel, and crab-style options
- > Load-sensing variable-displacement hydraulics provide optimal power
- > Return-to-center steering automatically realigns wheels
- > Conveniences include LED work lights, tie-down points for transport, and various clamping locations
- > Jobsite safety is increased
- > All NEW horn feature to allow for hose movement and prevent kinking
- > NEW storage options for remote or supplies

SPECIFICATIONS:

TOTAL WEIGHT	Puller: 1,150 lbs / 521.6 kg Placer: 1,325 lbs / 601 kg
WIDTH	51.5" / 1.3 m
LENGTH	Puller: 73" / 1.8 m Placer: 75" / 1.9 m
HEIGHT	Puller: 41.5" / 1.1 m Placer: 44.5" / 1.1 m
GROUND CLEARANCE	7"-7.25" / 0.178-0.184 m
STEERING ANGLE	180 deg.
ENGINE	11.7 hp / 8.7 kW Honda GX390
TIRES (STANDARD)	Carlisle 18x8.5
CLAMP OPENING	8.5" / 10.22 m



WHAT OUR CUSTOMERS SAY:

"Safety is one of our number-one priorities, and these machines definitely decrease the risk of injury. They have helped me complete jobs faster and with fewer people, and are so easy to use."

— Mike Kies, *CG Schmidt*